



Aotea College
Prospectus

2023

REMINDERS:

Thursday 16th June
Monday 25th July
Monday 1st August
Thursday 4th August
August 2022

Open Evening 3:30pm to 5:00pm & 5:30pm to 7:00pm commencing in Te Manawa
Enrolment applications close for 2023 out of zone Year 9 students
Ballot for out of zone 2023 Year 9 places
Parents notified of outcome of Year 9 ballot
Enrolment interviews commence for 2023 Year 9 students

Welcome

**Haere mai, haere mai,
haere mai, nau mai
haere mai**

Talofa lava

Kia orana

**Warm Pacific
greetings**



Welcome to Aotea College



Purpose

To enable holistic achievement and prepare young people as life-long learners to thrive in diverse local, national and global communities.

Vision

Learners and learning are at the centre of a culture of respect and Manaakitanga.

We work collaboratively to achieve excellence and innovation in teaching and learning.

We grow learning partnerships with whānau and the wider community to support strong learning pathways.

Potential for the growth, learning and development of all students is understood to be fundamental in achieving success across the curriculum and in qualifications.

Message from the Principal

Aotea College serves a strong and vibrant community. A firm sense of connection and belonging is an important aspect of the local school experience.

The college provides a broad and responsive curriculum where students can engage positively in learning, both within and beyond the classroom.

I believe students engage with learning and achieve well in their chosen pathways in an environment where they feel valued as individuals, where high expectations are the norm, where there is a strong foundation of positive relationships with other students, teachers and staff as well as coaches and members of the wider community.

The strong partnership between home and school supports high levels of engagement in school and participation in sporting and cultural activities as well as the performing arts and service in the community. Aotea College students are encouraged and supported to develop leadership skills across a range of fields throughout five years of secondary education. The college enjoys a reputation for excellence across a range of activities from local to national and international levels.

A clear focus on learning and a wide range of learning opportunities has seen the college's academic results prove the value of learning locally.

The Board has a clear strategic focus on

- Wellbeing as a priority, creating a sense of community for all.
- Innovative design of programmes with links to tertiary pathways and other learning partnerships.
- Participating in communities from local to global.
- Having a school that is a hub for education provision to the whole community.

We value greatly the support of a loyal community including past students and their families who actively engage in the myriad of opportunities provided for the young men and women of Aotea College. The school board, Ministry of Education and the college community collaborated to provide new, up to date and innovative spaces for teaching and learning. The college continues to grow and new modular buildings and plans for an increase number of teaching spaces will enable the college to manage roll growth in a safe and comfortable way over the years ahead. The college is an anchor school in the education network and the college's extensive land, allows the college to continue to serve the local community with the provision of good quality secondary education, close to home.

Kate Gainsford
Principal
Aotea College

Nau te rourou Naku te rourou Ka ora te manuhiri.

With your food basket and my food basket we will feed the visitors.

He waka kotuia kahore e tukutuku nga mimira.

A canoe that is interlaced will not become separated at the bow.

Taku mana, Taku Manawa, Tu tahi.

Our strength, our heart, as one.

About Aotea College

Aotea College is the newest secondary school built in the Wellington region and is the largest state secondary school in Porirua city. Located on a hill, overlooking the beautiful Porirua harbour and set in 14 hectares of grounds, the college is co-educational and caters for students from Years 9-13. The college has a roll of nearly 1200 students, many of whom walk or cycle to school. School buses operate to transport students to and from school from further afield. The college has its own rugby and football fields, an artificial turf, netball and tennis courts, Performing Arts auditorium and gymnasium. The college has specialist facilities for Art, Physical Education, Science, Technology and the Performing Arts.

Even though we are a relatively young college we draw on the wisdom of the past and the community that named and located the college on such a beautiful and prominent site. Our vision of the future is built on the original ideals and aspirations of those who built the College in 1977.

The college was gifted the name Aotea from the local iwi, Ngati Toa, in recognition of the bountiful and beautiful resources of the area. Also gifted was the saying, a whakatauki in Māori representing the powerful connection between the community's commitment, aspirations and support for the learning of all those who attend Aotea College.



Nau te rourou, Naku te rourou
With your food basket and my food basket

Ka ora te manuhiri.
We will feed the visitors

Taku mana, Taku Manawa, Tu Tahi.
Our strength, our heart as one.

The school crest represents the storehouse of knowledge. The pataka, the storehouse, held precious food reserves in traditional Māori settlements and nourished and enhanced the growth and strength of the community around it. In the same way, the community is part of growing, creating, collecting and sharing the knowledge with all who are part of the Aotea College community.

The school crest is worn on the school uniform today.

The school day is from 8.50am – 3.10pm. Teaching and learning is divided into a timetable of separate courses to make up a full learning programme. There is an early finish on Tuesday and Thursday afternoons.

The college has a café supplying healthy food, snacks, beverages and hot lunches.



We are a school that reflects all that is good about New Zealand's diverse society in the 21st Century

The college operates an enrolment scheme. This means any student whose home address is designated inside the Aotea College home zone has priority enrolment over students from outside the zone. Students from outside the home zone must apply for enrolment through the ballot system.

Contact Information

An application for enrolment is available from the school office or website. The Open Evening for 2023 Year 9 students is Thursday 16th June. We will be running two sessions – 3:30 to 5:00pm & 5:30 to 7:00pm commencing in Te Manawa. Each child and their family meet with college staff for an enrolment interview at a time and date to be advised. Enquiries are welcome during office hours of 8:00am – 4:00pm: Phone 04 237 3166 or by email; Fax 04 237 3170; Postal address Okowai Road, Porirua City 5024, New Zealand, or PO Box 50 046 Porirua City 5240, New Zealand; Website, www.aotea.school.nz; Email, enquiries@aotea.school.nz



Uniform

Uniform

Aotea College is a uniform school.

ALL year 9-12 students must wear full uniform. Year 13 students wear tidy clothing, suitable for a business workplace.

We have high expectations about the wearing of our uniform. Students may be required to retrieve items of correct uniform from home to ensure students appear in full correct uniform at school.

Uniform is purchased online through Argyle Schoolwear. Their website www.argyleonline.co.nz



Pictured: Girls – School crested white shirt with school navy pleated skirt, shorts.

Boys – School crested white shirt with school navy trousers, school navy shorts and school socks, school blazers.

Girls

- School crested jersey
- School crested sweatshirt
- School jacket
- School crested white shirt ~ long or short sleeved
- Argyle school navy tailored trousers
- School navy pleated skirt
- Black, blue college socks or black or white short socks, or black pantyhose
- School navy shorts
- Blazer ~ optional
- School waterproof jacket

Boys

- School crested jersey
- School crested sweatshirt
- School jacket
- School crested white shirt ~ long or short sleeved
- Argyle school black tailored trousers
- School navy shorts
- Lavalava
- Black, blue college socks or black or white short socks
- Blazer ~ optional
- School waterproof jacket
- School Bucket hat or cap

Plain black leather 'look' lace up shoes
Black sandals with a back strap (i.e. Roman sandals)



Pictured: Accepted plain black leather lace up shoes and black sandals with a back strap (Roman sandals)

Students
are
expected
to be in full
and correct
uniform

A Broad and Responsive Curriculum

We value the pursuit of academic excellence and aim to provide a holistic learning experience with a broad range of learning opportunities. We have innovative teaching programmes that are responsive to the diverse needs of students.

Teaching and learning programmes include partnerships with tertiary and community organisations.

Connections with community and tertiary providers enhance the accessibility of a full range of vocational and academic pathways. Most students are involved in sporting and cultural activities. The pursuit of excellence in these fields is also valued and supported. Leadership and team skills are an important part of the broader education offered at Aotea College.

A Connected School

Our aim is for all students to become strong independent **and** collaborative, life-long learners. All students are expected to use digital technology to enhance teaching and learning and enable students to work at their own pace and collaborate with others.

On-line learning opportunities enable school work to be accessed from home and at school.

Families are encouraged to buy or lease chromebooks for use at school and home.

Secure storage for laptops, with capacity for charging is provided at the school.

Our physical environment is purpose built and acoustically engineered and set up to ensure a wide range of learning opportunities.

Learners will experience traditional direct, instruction from teachers as well as developing skills in independent learning and collaborative problem solving. Aotea College is at the forefront of developing a progressive curriculum to engage and better prepare students as life long learners.

Integrated Learning Opportunities

In Year 9 and 10 the English and Social Science disciplines combine in an Integrated learning programme. These classes are team taught to maximise quality curriculum coverage.

Learning in Mathematics and Science classes is supported by customised digital technology and authentic learning opportunities in the real world.

Science and Physical Education courses both make use of the college's proximity to the Royal NZ Police College, with courses in Forensics in the junior school and pre recruitment police training for selected students in the senior school.

English, Science and Mathematics are compulsory courses in Year 11 for NCEA Level 1.

Health Science

New Zealand has a well-deserved reputation for producing high quality health professionals in

demand both in New Zealand and worldwide.

Aotea College provides pathways for students into the Health Sciences through creating student awareness and appreciation of health issues facing communities, as well as improving student achievement in Science.

Technology

Students of Technology experience a wide range of specialist technologies. Integration of specialist areas is actively promoted for product design and technology. Students prepare for related learning at tertiary level.

Visual and Performing Arts

The Visual Arts provides students the opportunity to develop creative thinking and skills to express their ideas. Students work across a range of media. We offer Painting, Printmaking, Photography, Design and Pacific Art.

Performing Arts provides students with the opportunity to express themselves through creative and engaging curricula. We offer Dance, Drama and Music as separate courses along with a Performing Arts course that includes all three disciplines with costume, set design and management standards.

Languages

The college offers French, Japanese, Mandarin and Te Reo languages. Provision for other languages may be possible on application. Basic Te Reo is learned by all students and teachers throughout the College. English language learning support is available for both International and domestic students.

Learning Services

The Learning Services Department works to support students to access the curriculum, and/or who need special assessment conditions to remove barriers to success. A strong team of experienced teachers and teacher aides support a wide range of students' diverse needs.

Pathways

The Pathways Faculty works across the school with teachers, Whānau leadership and families to help students develop individualised pathway plans through and beyond school. This process includes goal setting, individual pathway planning and advice for preparing for further education, training or employment.

The Pathways Faculty links students with Universities, Wellington Trades Academy, local polytechnics, private providers and industry training organisations. Students can access a range of short and long term courses to gain qualifications as well as an insight into possible careers and tertiary pathways.

Workplace learning is available through Gateway to support students to develop an understanding of workplace and employability skills.

Hui Ako

Students meet in Hui Ako classes regularly with their Hui Ako teacher. Senior Hui Ako classes of Y11-13 students, focus not only on gaining qualifications but also on developing key competencies and learning pathways to further education.

Younger students follow a programme where pro-social skills, study skills and leadership are nurtured. Wellbeing, Kaupapa, Māori and Pathways are a key focus.

Scholarships

Scholarship level learning is undertaken by students across a range of subjects in Year 13. Special scholarships to universities and other tertiary institutions are available to a wide range of senior students.

A wide curriculum

A broad curriculum includes a range of sporting and cultural opportunities in the arts for students to engage in. The wide variety of opportunities is supported by volunteers from the community, families, teachers and support staff.

Sporting Opportunities

Please visit the Aotea College Sport Website for updated information. If there are any other sports you are interested in please contact the sports department. www.sport.aotea.school.nz

CSW Weekly competitions

Badminton	Rugby League
Basketball	Rugby Sevens
Bowls (indoor)	Rugby Union
Bowls (lawn)	Softball
Cricket	Table Tennis
Football (outdoor)	Touch
Futsal	Flag/Tag
Golf	Underwater Hockey
Hockey (outdoor)	Volleyball
Netball (outdoor)	

CSW Regional or National Tournaments

AFL	Multi Sports
Athletics	Squash
Cycling	Swimming
Equestrian	Waka Ama
Ki O Rahi	Yachting
Mountain Biking	

Cultural and Performing Arts

The following options are subject to student interest and availability of instructors and instrumental teachers.

Barbershop	Rockbands
Choreography	Sound and Lighting
Choir	Vocal tuition
Debating	Instrument tuition
Jazz Band	Piano
Kapa Haka	Guitar
Polyfestival	Drums
Quartets	

Curriculum Table

The NZ Curriculum has eight learning areas. English, Social Sciences, Mathematics, Science, Technology, Health & Physical Education, Arts and Languages. Learners may work across NCEA levels and Learning Areas to gain their qualifications. Courses provide variety and flexibility within a full programme of learning and student choice is supported with Pathway advice.

Learning areas	Year 9 - Year 10 Core and flexible options	Learning in Years 11, 12 and 13 (Select 6 subjects)		
		NCEA Level 1	NCEA Level 2	NCEA Level 3
English	Year 9 - 10 Integrated studies English & Social Studies	English	English English/Social Studies Integrated	English
Social Sciences	Integrated studies (English and Social Studies) Student optional choices: Business Studies Commerce Media Studies	Accounting Business Studies Economics Geography History	Accounting Business Studies Classical Studies Economics Geography History Media Studies Psychology Tourism	Accounting Business Studies Classical Studies Economics Geography History Media Studies Psychology Tourism
Mathematics	Mathematics	Mathematics	Mathematics	Mathematics with Calculus Mathematics with Statistics
Science	Science – core Student optional choices: Forensic Science Food Chemistry Space Science	Science Biology Nature of Science Earth Space Science	Science Biology Chemistry Physics	Science Biology Chemistry Physics
Technology	Student optional choices: Coding E-Textile Technology Product Technology and Jewellery Design Design Jewellery Food	Carpentry Design & Visual technology Digital Environments Hospitality Textiles Technology Jewellery	Carpentry Design & Visual technology Digital Design & Digital Science Hospitality Textiles Technology Jewellery	Product Technology Design & Visual technology Digital Design & Digital Science Hospitality Textiles Technology Jewellery
Health & Physical Education	Health & PE – core Student optional choices: Training Sport around the world Sport and Leadership Outdoors	Health Education Physical Education Physical Education Outdoors	Health Education Physical Education Physical Education Outdoors Police Studies	Health Education Physical Education Police Studies
Arts	Art Drama Music Dance Performing Arts	Art Drama Music	Art and Art Design Drama Music Photography Performing Arts	Art Painting Drama Music Photography Performing Arts
Languages	French Japanese Te Reo Māori Mandarin	French Japanese Te Reo Māori Language Studies (ELL)	French Te Reo Māori Language Studies (ELL)	French Te Reo Māori Language Studies (ELL)
Pathways	Careers in Hui Ako	STAR short courses	STAR short courses Gateway, Trades academy	STAR short courses Retail Operations Gateway
Hui Ako	Aotearoa Histories / Leadership / Key Competencies & pro social skills / Te Reo o Aotea / Cyber safety / Study Skills / Careers Education after Study Skills	Leadership / Key Competencies & pro social skills / Te Reo o Aotea / Cyber safety / Study Skills / Careers Education after Study Skills		

Please Note: These courses are subject to change without notice due to staffing supply and other factors. Full course details are supplied in the course selection information handbook (available online)



Connectedness and Manaakitanga

Please ask
for help
– we'll do
whatever
we can to
support you

Pastoral Care at Aotea College:

The college supports students with regular contact between home and school. This is a strong feature of the college's pastoral network. In addition students will be supported by:

A Hui Ako teacher – who sees students regularly every week and is responsible for monitoring and tracking students' academic achievement, personal growth and wellbeing.

Whānau Leaders – have overall responsibility for a Year level group of students from Year 9-13, and their achievement and pastoral care.

Guidance Counsellors – are available for confidential appointments.

Careers Advisors – are available for advice and support about pathways to further education, training or employment.

Pathways department – for students to access Pathways advice, guidance and support to enrol in Secondary Tertiary Programmes and other courses offered by external providers.

Learning Support – for students and parents to access support and information to help learners with diverse needs.

International students' team - responsible for homestay, pastoral and academic support for international students.

Peer supporters – Year 12 students support Year 9 students to settle into college life.

College health clinic staffed by a nurse five days a week, a doctor once a week, and a mental health professional two days a week with a free service to all students and a physio. Appointments are made through the office.

Social Workers and Youth workers – support families and young people.

Pro-social skills – The college uses Positive Behaviour and Restorative practice to create a culture supportive of student learning and wellbeing. Developing students' own sense of personal and social responsibility is important for developing positive relationships and achieving good learning outcomes.

Wellbeing – We conduct surveys of students and staff to include diverse views of school life as we create a safe and caring climate.

Student Leadership:

Our students are expected to interact with groups in the wider community and within the College in acts of service. Student leaders are active in supporting academic, sporting, wellbeing, arts, environmental, rainbow and cultural pursuits. Leadership opportunities include formal roles in student council, peer support, whānau student leaders, prefects, head student and kaiārahi roles and many roles that students develop themselves.

Contact with Home:

Connecting with families begins with an enrolment interview for every student, and an Orientation Day in term 4.

Parents and caregivers attend a pōwhiri to welcome new students at the beginning of the year.

Goal setting conferences with students and whānau are facilitated by Hui Ako teachers.

A social function for Year 9 whānau is held in term 1 to meet teachers, senior students and staff.

Individual academic course conferences with teachers, students and whānau are held twice each year, as well as report evenings at the college.

NCEA information evenings, Cybersafety workshops and Parent network meetings are held regularly throughout the year.

Parents and caregivers support fundraising and connections with the school by attending Aotea College Association meetings held monthly or Pacific Voices meetings held each term as well as meetings for Kapa Haka. Sports teams groups like Barbershop.

Academic achievement and concern notifications are sent to parents as appropriate. Parents are contacted electronically with an Early Notification System (ENS) if a student is absent without notification.

A uniform issue can be followed up by phoning the school. We do not accept notes from students regarding uniform.

Meetings with teachers can be arranged by phoning the school to make an appointment at a mutually convenient time. All staff can also be contacted via email by using firstname.lastname@aotea.school.nz example Brad.Williamson@aotea.school.nz.

Parents will be contacted if their child is unwell. Children who are unwell must not come to school.

Website:

Our website has regular updates on curricular and co-curricular news and achievement <https://sites.google.com/aotea.school.nz/whanau>

Information is communicated with our community through our website, facebook page, Instagram, the whānau portal and newsletters.



Excellence

Our aim is to provide the best education in a local setting for a diverse community. Students are expected and supported to achieve personal excellence through access to a curriculum that offers breadth and depth in learning opportunities.

The New Zealand Curriculum enables the college to provide broad and responsive programmes of learning. It is possible for students to have a programme tailored to include different levels of learning. Where appropriate we are able to make individual arrangements for students to study at tertiary level while still at school.

The college arranges for families to have good access to information about NCEA and course selection to support their young peoples' learning. These opportunities are highly valued by parents, teachers and students.



Student Leaders – left to right Faamalele Tovio, Samuel Lee, Leo Enoka, Alycia Capes-Parr, Erena Page, Caleb Smith, Amelia Taatiti – absent Taranaki Te Hauora



Principal's award recipients ~ Croshan Lepou & Izzy Groves



Performing Arts recipients ~ Hannah Mercer and Elijah Mareko

We have
high
expectations
of our
students as
learners

Student Leadership

We encourage students to get involved and develop their talents

All students are involved in Whānau competitions across a range of activities from academic to sporting



School Leaders

Aotea College supports a wide range of leadership opportunities for all students. Student leaders contribute to a positive school culture with a focus on excellence in academic, sporting, and cultural pursuits as well as community participation and wellbeing.

Year 13 Leadership

In Year 13 students have appointed positions of responsibility and they lead a wide variety of projects in academic, cultural and sporting activities within the school and the wider community.

Peer Support

The Peer Support programme is run by Year 12 students who take responsibility for assisting Year 9 students in their transition from contributing schools to secondary school.

Student Council

The college has a Student Council that brings together student leaders from all year levels. The School Council plays a role in developing student leadership and service to the school and community. Student representation on the Board of Trustees is a feature of the College as in all New Zealand secondary schools.

Whānau Activities

There are four Whānau groups which Aotea students belong to Korimako, Kōtuku, Kererū and Pūkeko. Student Leaders are attached to each Whānau group. Whānau student leaders organise events, including sporting, competitions and a range of activities to support school and community service.

Wellbeing Team

The student wellbeing team encourages and supports students to take ownership of their wellbeing and aims to link students with school wellbeing services as appropriate. The team involves students from all year levels and works in partnership with staff.



Kōtuku



Korimako



Pūkeko



Kererū

International Students



Aotea College has had international students for over 20 years

International Students

Aotea College has a well established tradition of welcoming international students and providing them with a quality education and New Zealand lifestyle experience.

The International Department works with agents, schools and families to enrol international fee paying students from around the world. The students are supported by the Director of International and the International Programme Coordinator.

Further support is available from Japanese, Mandarin, French and Spanish speaking staff members.

Aotea College has welcomed students from a wide range of countries in Asia, Africa, Europe and both North and South America.

Aotea College also provides programme's for short stay groups comprising of a mixture of English tutorial's, school-based activities, cultural competency and local sightseeing.

We welcome students who are part of exchange programmes with organisations such as Rotary and AFS. Opportunities are available for our domestic students through outbound exchanges, International Club and Student Leadership positions.

The College is a signatory to the Code of Practice for the Care and Protection of International Students. Any enquiries can be directed to the International Director.



Please see the College website for details:

<http://aotea.school.nz/international>

Follow us on Instagram:

[@aoteacollegeinternational](https://www.instagram.com/aoteacollegeinternational)

The Enrolment Process

When applying to enrol you must send the following:

- 1 Completed enrolment application form.
- 2 A copy of your child's birth certificate.
- 3 Something to confirm your address (a copy of a Rates/Rental/Utility bill).
- 4 A copy of your child's previous school report.



Aotea College's enrolments are controlled by an enrolment scheme which helps us to manage the growth of the school.

Please have your in zone enrolment applications at Aotea College by Friday 2nd September 2022.

Priority for enrolment at Aotea College is specified under the Education Act. Students are accepted in the following order.

In zone students have automatic right of enrolment.

Out of zone students are accepted in the following order of priority.

- 1) Students enrolled in a special programme run by the College
- 2) Students who have siblings currently at the college.
- 3) Sibling of a former student of the college
- 4) Student who is a child of a former student.
- 5) Child of an employee or a child of a Board member.
- 6) All other applicants.

Year 9 2023 Enrolments:

A ballot will be held on Monday 1st August 2022 for out of zone enrolments. All applicants will be notified by Thursday 4th August 2022. Enrolment interviews will commence in late August at a date to be advised. **Please ensure your out of zone application for enrolment is sent to the college no later than Monday 25th July 2022.**

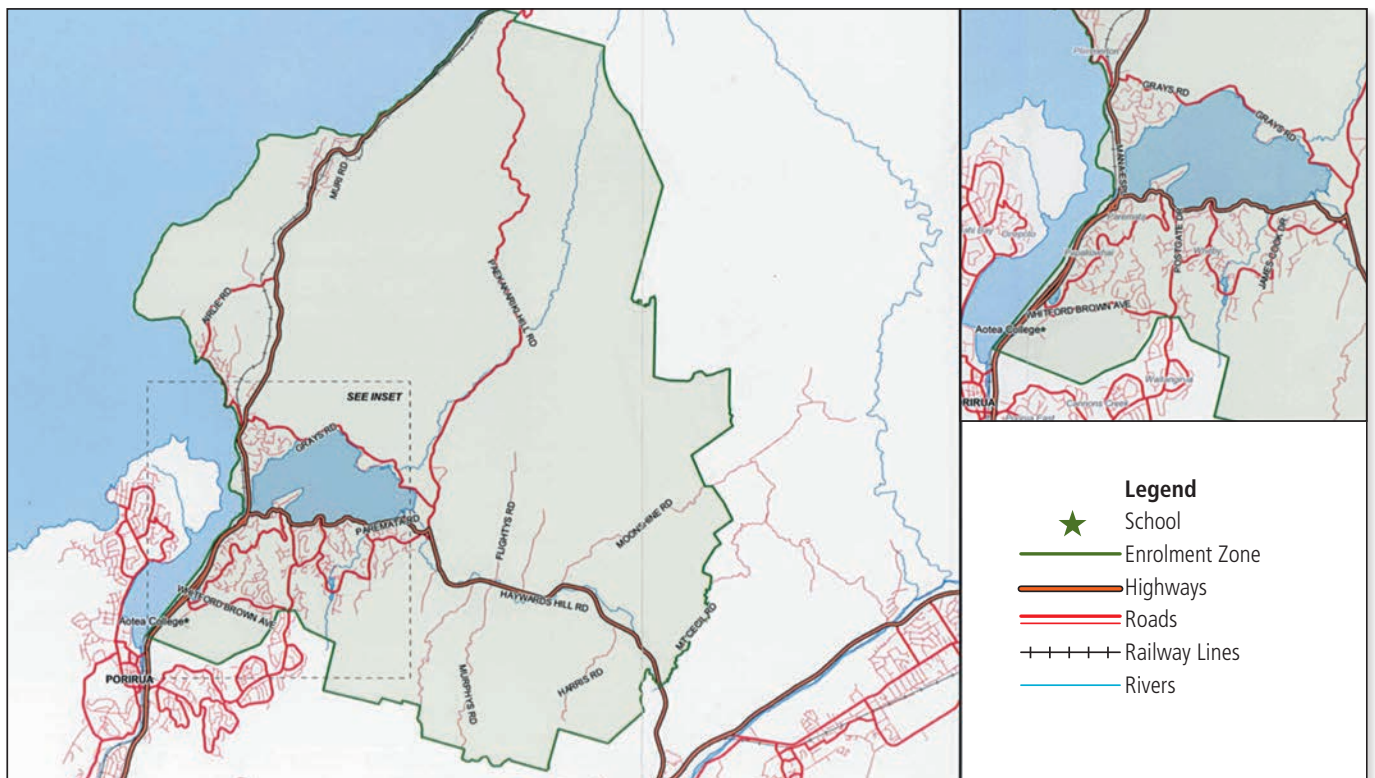
Please note that if your out of zone application is received after the closing date, it cannot be included in the ballot. Your application would then be added to the waiting list.

Year 10-13 2023 Enrolments:

All 2023 applications for enrolment for year 10 -13 students must be received at Aotea College by Monday 17th October 2022.

If required a ballot for Year 10-13 students will be held Friday 21st October 2022. Enrolment interviews for all successful students will take place after close-off. Students and contributing schools will be notified of the requirement for student data as required.

Aotea College Zone: - the boundary is shown in green



REMINDERS:

Thursday 16th June
Monday 25th July
Monday 1st August
Thursday 4th August
August 2022

Open Evening 3:30pm to 5:00pm & 5:30pm to 7:00pm commencing in Te Manawa
Enrolment applications close for 2023 out of zone Year 9 students
Ballot for out of zone 2023 Year 9 places
Parents notified of outcome of Year 9 ballot
Enrolment interviews commence for 2023 Year 9 students



Aotea College
Okowai Road
Porirua City

PO Box 50-046 Porirua City 5240
Telephone 04 237-3166 Facsimile 04 237-3170
www.aotea.school.nz
enquiries@aotea.school.nz